An underwater photograph showing a school of small, silver fish swimming in clear blue water above a dense field of green seagrass. The scene is brightly lit, suggesting a shallow depth.

# **Coastal Blue Carbon in the policy context of the UNFCCC and beyond**

**Experts' seminar on coastal blue carbon**

**9th June 2015 - Paris, France**

**Dorothee Herr, GMPP, IUCN**

[illegible]



**United Nations**  
Framework Convention on  
Climate Change



# **1. BRIEF INTRODUCTION TO THE UNFCCC & HOW COASTAL BLUE CARBON FITS INTO THE AGENDA**

## **2. OVERVIEW OF INCENTIVES & MECHANISMS FOR COASTAL BLUE CARBON**

**ANNEX I: NATIONAL REPORTS & CDM**

**NON ANNEX I: NATIONAL REPORTS, REDD & NAMAs**

## **3. ONGOING NEGOTIATIONS UNDER THE UNFCCC**

## **4. BRIEF SIDE STEP: POLICIES BEYOND THE UNFCCC**

# United Nations Framework Convention on Climate Change (UNFCCC)

## Selected dates

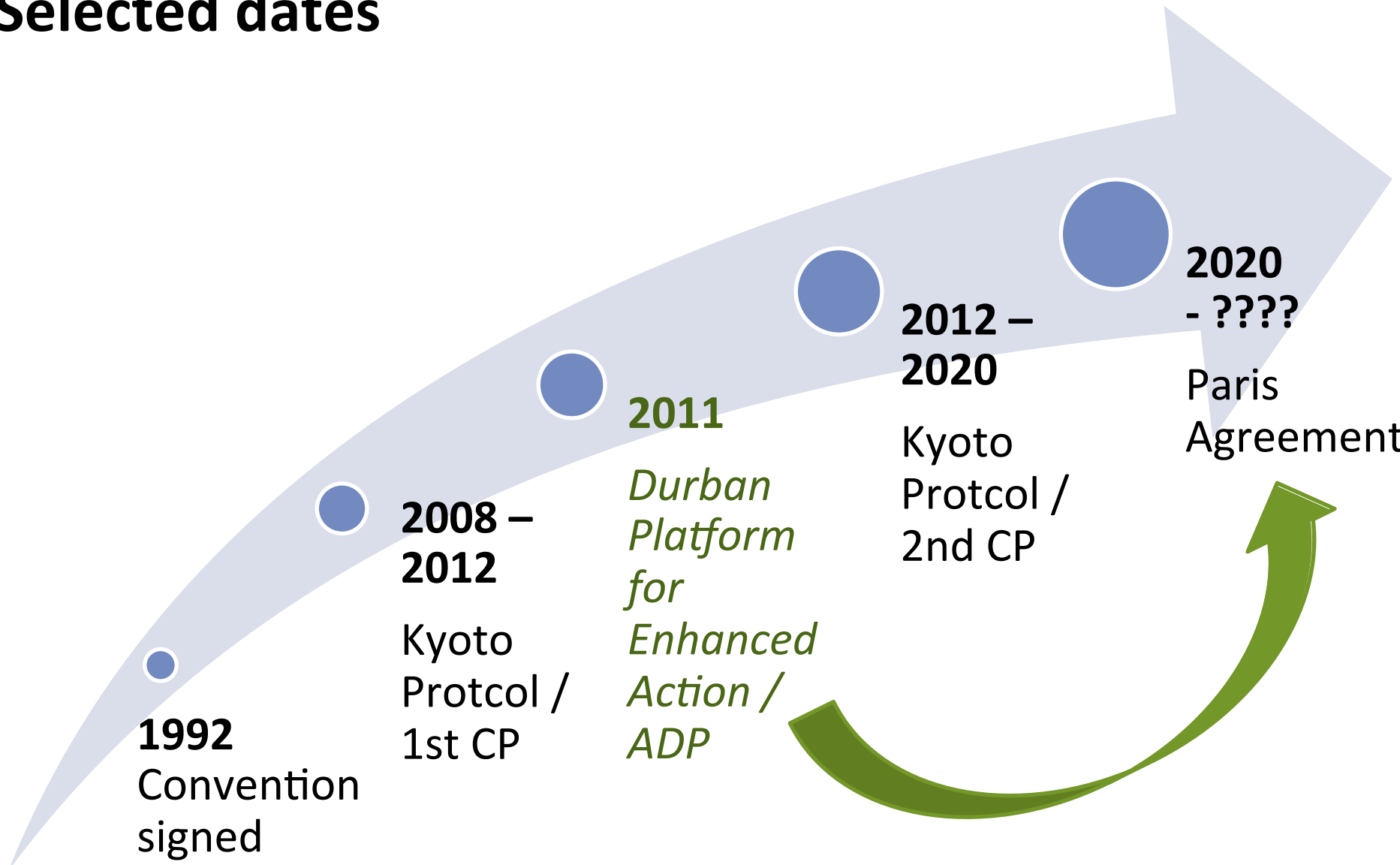
**1992**  
Convention  
signed

**2008 –  
2012**  
Kyoto  
Protocol /  
1st CP

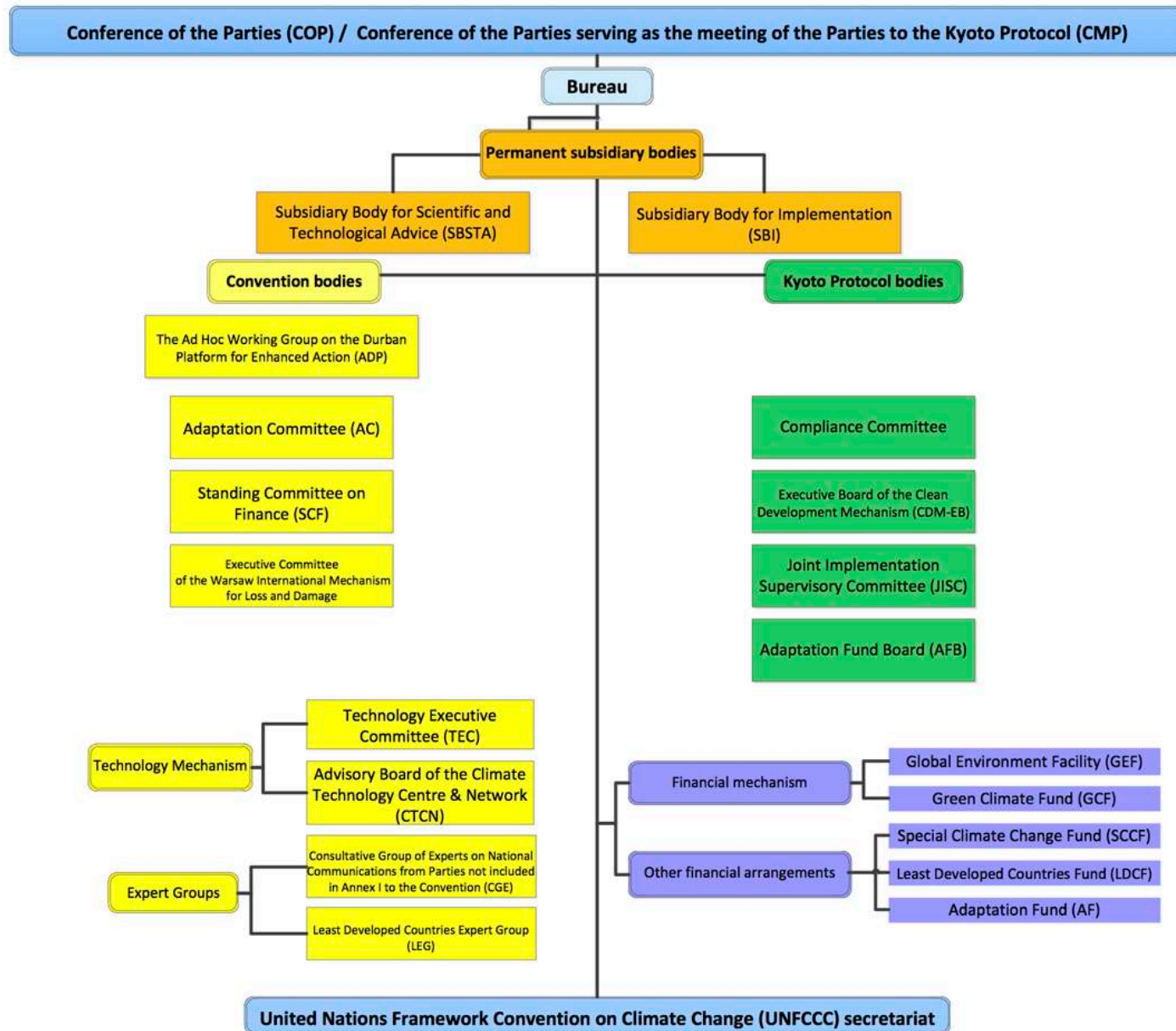
**2011**  
*Durban  
Platform  
for  
Enhanced  
Action /  
ADP*

**2012 –  
2020**  
Kyoto  
Protocol /  
2nd CP

**2020  
- ????**  
Paris  
Agreement



# BODIES OF THE UNFCCC

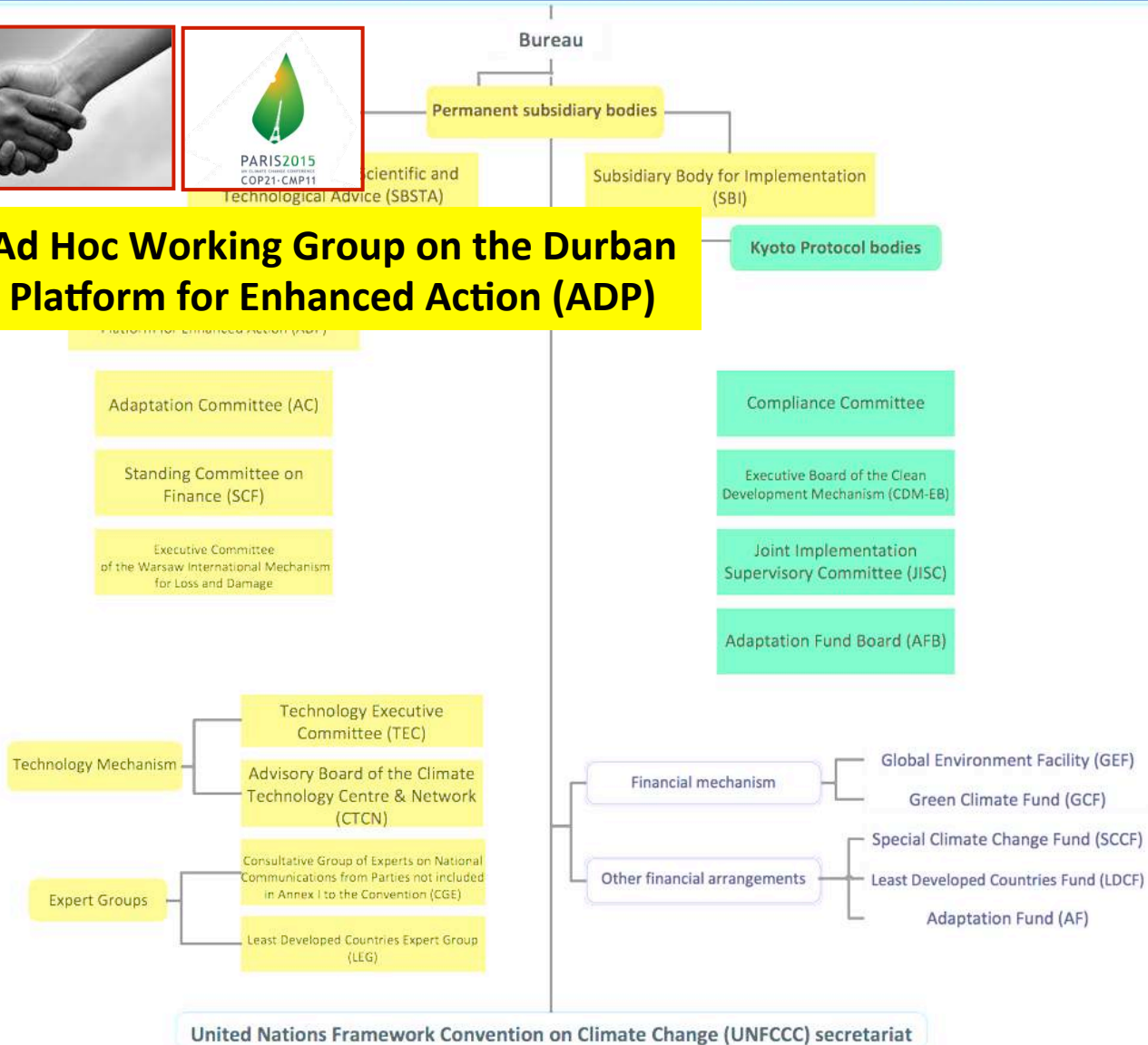


# BODIES OF THE UNFCCC

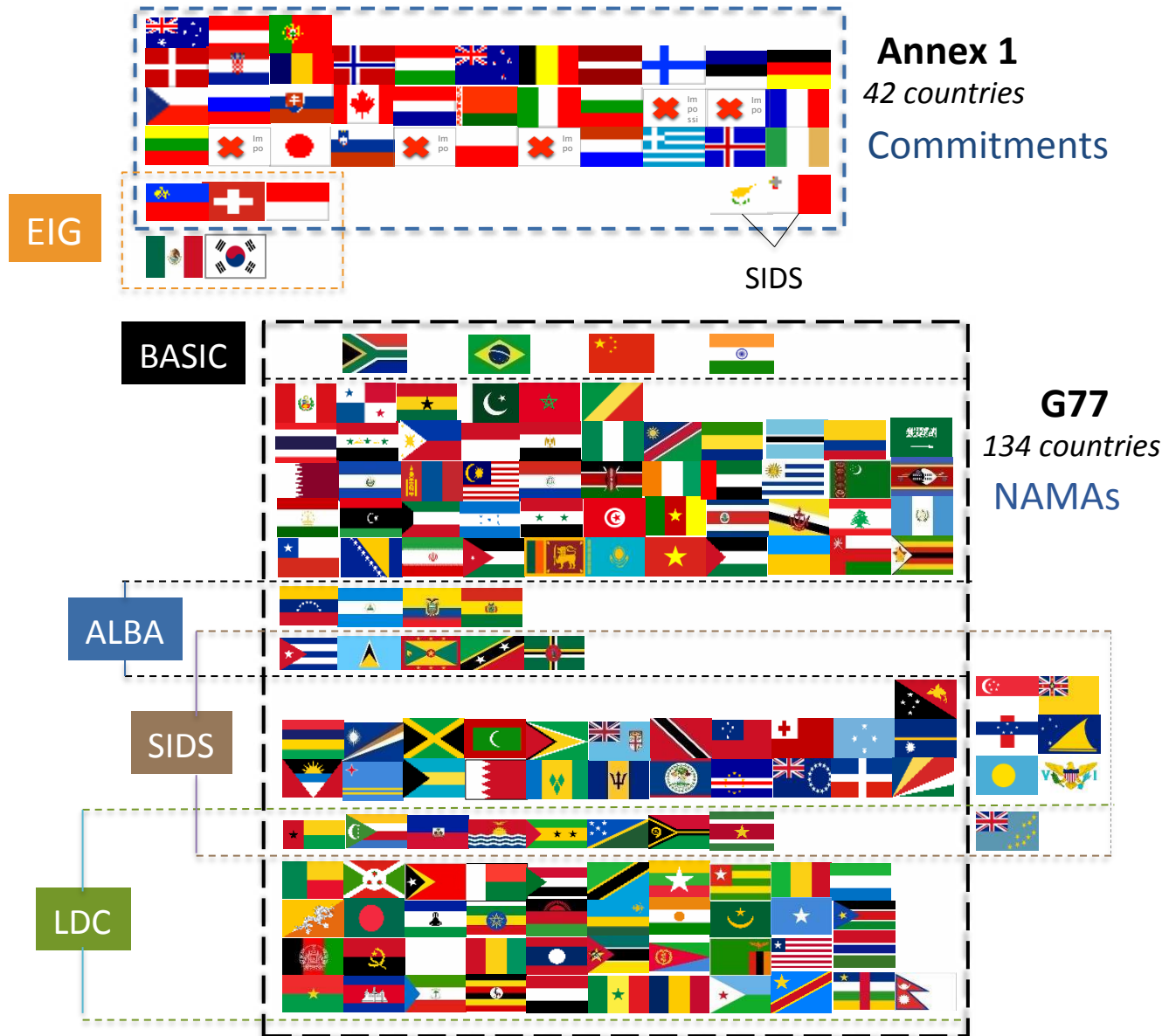
## Conference of the Parties (COP) / Conference of the Parties serving as the meeting of the Parties to the Kyoto Protocol (CMP)



### Ad Hoc Working Group on the Durban Platform for Enhanced Action (ADP)



# Parties will present their Intended Nationally Determined Contributions by mid-2015 to be part of a Climate Agreement



Paris 2015



UNFCCC

COP 21

# Coastal Blue Carbon under the UNFCCC - overview



Figure 1.1 Blue carbon ecosystems: mangroves (top left, © Sterling Zumbrunn, CI), seagrasses (bottom left, © Miguel Angel Mateo), and tidal salt marshes (right, © Sarah Hoyt, CI)

*Blue Carbon* / coastal & marine ecosystems discussed as sinks and sources

1992

Aware of the role and importance of coastal ecosystems of s

2005

REDD negotiations started -

Reducing Emissions from Deforestation and forest

2009

Technical and scientific aspects

consider // IPCC Wetlands Supplement

2013

## 2. OVERVIEW OF INCENTIVES & MECHANISMS FOR COASTAL BLUE CARBON

### “Reporting” incentives

Supporting/achieving a better  
national GHG balance

Better managed wetlands = less  
emissions to report

- **National GHG reports**
- **INDCs**
- ✓ Land Use, Land Use Change  
and Forestry Sector  
(LULUCF), incl. REDD

### “Mechanism” incentives

Using mitigation mechanisms  
to develop national programs  
and attract funding

- **REDD+**
- **NAMAs**

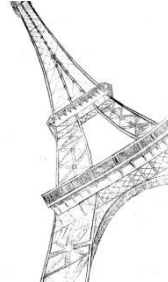
### Market incentives

Using the regulatory carbon  
market

- **CDM**
- **REDD+ (?)**



**United Nations**  
Framework Convention on  
Climate Change



**1. BRIEF INTRODUCTION TO THE UNFCCC & HOW COASTAL BLUE CARBON FITS INTO THE AGENDA**

**2. OVERVIEW OF INCENTIVES & MECHANISMS FOR COASTAL BLUE CARBON**

**ANNEX I: NATIONAL REPORTS & CDM**

**NON ANNEX I: NATIONAL REPORTS, REDD & NAMAs**

**3. ONGOING NEGOTIATIONS UNDER THE UNFCCC**

**4. BRIEF SIDE STEP: POLICIES BEYOND THE UNFCCC**

# ANNEX I - NATIONAL REPORTS



Submitted National Communications

Submitted Biennial Reports

National Inventory Submissions

Annex I Parties provide **annual national GHG inventories covering emissions and removals of direct GHGs** from .... **LULUCF**, ..., and for all years from the base year or period to the most recent year.

# Land Use, Land-Use Change and Forestry (LULUCF) & IPCC Guidelines



**2006 IPCC Guidelines for  
National Greenhouse Gas Inventories**

**ipcc**  
INTERGOVERNMENTAL PANEL ON climate change



# Land Use, Land-Use Change and Forestry (LULUCF) & IPCC Guidelines

## IPCC Land Classification



### Forest land

- All woody vegetation according to national definitions



### Cropland

- Crops including rice and agro-forestry not included above



### Grassland

- All rangelands and pastures not included above



### Settlements



### Wetlands

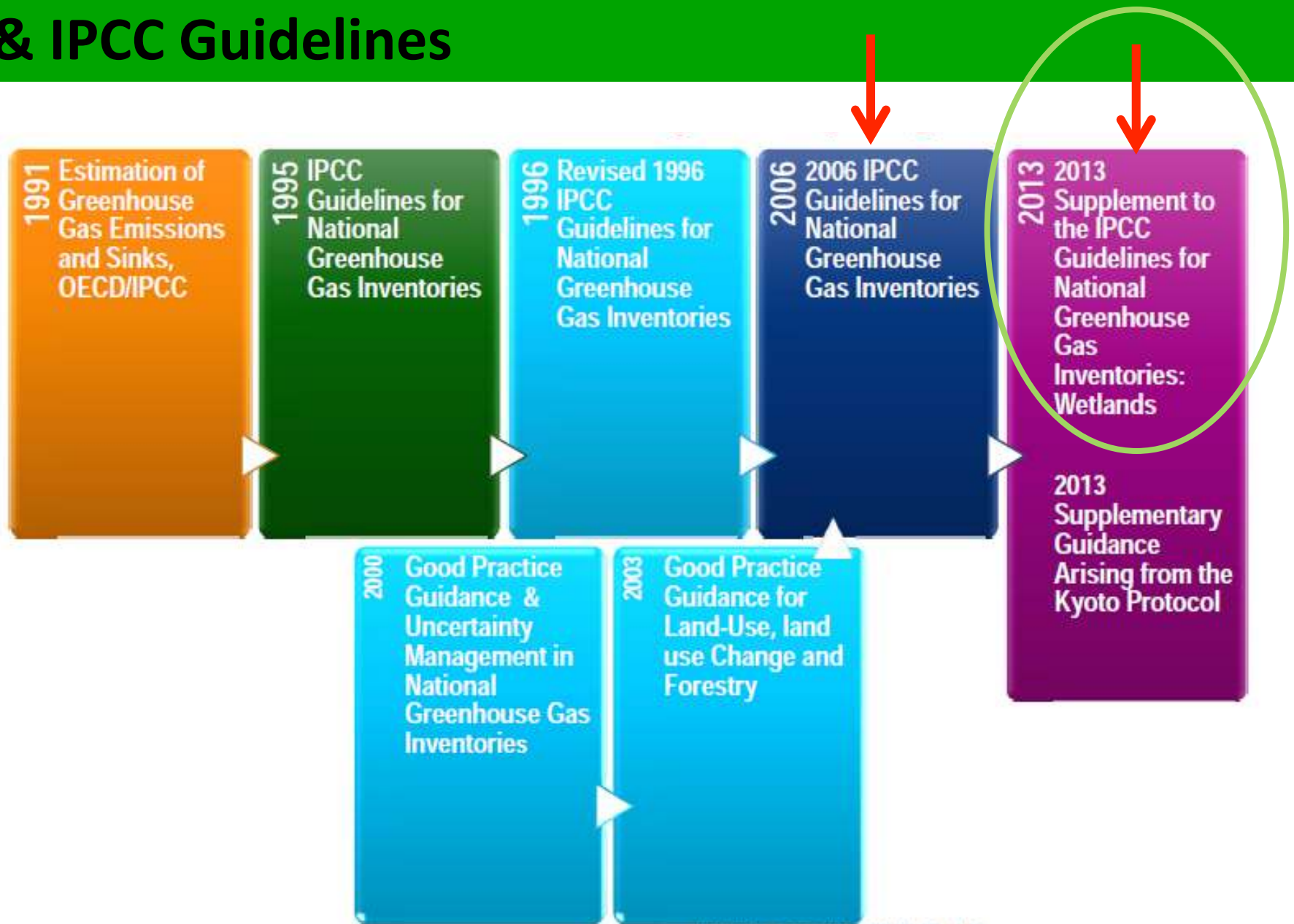
- Wetlands not included above (peat use and flooded lands)



### Other Lands

- Includes bare soil, rock, ice and lands not included above

# Land Use, Land-Use Change and Forestry (LULUCF) & IPCC Guidelines



# ANNEX I - NATIONAL REPORTS

Submitted National Communications

Annex I Parties that have ratified the Kyoto Protocol must include supplementary information in their national communications and their **annual inventories of emissions and removals of GHGs to demonstrate compliance with the Kyoto Protocol's commitments.**

Submitted Biennial Reports

National Inventory Submissions

inventories annually by 15 April

# Annex I - NATIONAL REPORTS

## Kyoto Protocol

Mandatory reporting emissions by sources and removals by sinks of CO<sub>2</sub> and other GHG resulting from LULUCF activities (Art. 3.3)

**Afforestation, reforestation and deforestation, forest management**

**Voluntary reporting** (Art. 3.4) on revegetation, cropland management and grazing land management and **wetland drainage and rewetting activity** (in the 2<sup>nd</sup> CP).

→ Use **2013 Supplement to the 2006 IPCC Guidelines for National GHG Inventories: Wetlands.**



# ANNEX I - KP

## Clean Development Mechanism (CDM)

Emission-reduction **projects in developing countries**  
**Industrialized countries can use credits to a meet a part of their emission reduction targets** under the Kyoto Protocol.

The mechanism stimulates (*should stimulate*) sustainable development and emission reductions, while giving industrialized countries some flexibility in how they meet their emission reduction limitation targets.



# ANNEX I - KP

## Clean Development Mechanism (CDM)

### Large scale afforestation and reforestation methodologies



+ **Approved large scale afforestation and reforestation methodologies**

+ **Proposed new A/R methodologies**  
[Pending | Finalized]

Requests for:

+ Clarification of approved A/R methodologies  
[Pending | Finalized]

+ Revision of approved A/R methodologies [Pending | Finalized]

+ Clarification on application of approved A/R methodological tools  
[Pending | Finalized]

+ Revision of approved A/R methodological tools [Pending | Finalized]

### Small scale afforestation and reforestation methodologies



+ **Approved small scale afforestation and reforestation methodologies**

Requests for:

+ Clarification and revision of approved small-scale A/R methodologies  
[Pending | Finalized]

## Land-use sector

- **Afforestation**
- **Reforestation**
- Deforestation
- Forest management
- Revegetation
- Cropland management
- Grazing land management
- Wetland drainage and rewetting activity

# ANNEX I - KP

## Clean Development Mechanism (CDM)

Large scale afforestation and reforestation methodologies 




+ Approved large scale afforestation and reforestation methodologies

+ Proposed new A/R methodologies


[Pending | Finalized]

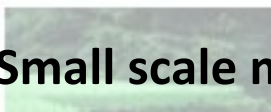
Large scale methodologies

Meth Number	Full View and History	Meth Booklet Ref
AR-AM0014	Afforestation and reforestation of degraded mangrove habitats — Version 3.0	 Ref AR-AM0014

[Pending | Finalized]

+ Revision of approved A/R methodological tools [Pending | Finalized]

Small scale afforestation and reforestation methodologies 



+ Approved small scale afforestation and reforestation methodologies

Small scale methodologies

Meth Number	Full View and History	Meth Booklet Ref
AR-AMS0003	Afforestation and reforestation project activities implemented on wetlands — Version 3.0	 Ref AR-AMS0003

### Land-use sector

- Afforestation
- Reforestation

- Cropland management
- Grazing land management
- Wetland drainage

# ANNEX I - KP

## Clean Development Mechanism (CDM)

### Large scale afforestation and reforestation methodologies



+ Approved large scale afforestation and reforestation methodologies

+ Proposed new A/R methodologies  
[Pending | Finalized]

Requests for:

+ Clarification of approved A/R methodologies  
[Pending | Finalized]

+ Revision of approved A/R methodologies [Pending | Finalized]

+ Clarification of approved A/R methodologies [Pending | Finalized]

[Pending | Finalized]

+ Revision of approved A/R methodologies [Pending | Finalized]

[Pending | Finalized]

## NEW CDM categories?

On the agenda for 2016

### Small scale afforestation and reforestation methodologies



+ Approved small scale afforestation and reforestation methodologies

Requests for:

+ Clarification and revision of approved small-scale A/R methodologies  
[Pending | Finalized]

CDM?

## Land-use sector

- Afforestation
- Reforestation
- Deforestation
- Forest management
- Revegetation
- Cropland management
- Grazing land management
- Wetland drainage and rewetting activity

# SUMMARY SO FAR ....

	Non Annex I countries	Annex I countries
<b>National Communication and reports / commitments to UNFCCC</b>		<ul style="list-style-type: none"> <li>- Good wetland management = better GHG balance</li> <li>- KP Parties can elect <b>rewetting and drainage</b> as LULUCF activity</li> </ul>
<b>&amp; new IPCC wetlands guidelines</b>		Mandatory to use
<b>CDM – mangroves only</b>		Can be used to support mangrove A/R activities in developing countries
<b>REDD</b>		N/A
<b>NAMAs</b>		N/A



**United Nations**  
Framework Convention on  
Climate Change



**1. BRIEF INTRODUCTION TO THE UNFCCC & HOW COASTAL BLUE CARBON FITS INTO THE AGENDA**

**2. OVERVIEW OF INCENTIVES & MECHANISMS FOR COASTAL BLUE CARBON**

**ANNEX I: NATIONAL REPORTS & CDM**

**NON ANNEX I: NATIONAL REPORTS, REDD & NAMAs**

**3. ONGOING NEGOTIATIONS UNDER THE UNFCCC**

**4. BRIEF SIDE STEP: POLICIES BEYOND THE UNFCCC**

# NON - ANNEX I NATIONAL REPORTS

## Submitted National Communications

NCs from developing countries provide information on **greenhouse gas (GHG) inventories**, measures to mitigate and to facilitate adequate adaptation to climate change, and any other information that the Party considers relevant to the achievement of the objective of the Convention.

Developing country Parties are required to submit their first NC within three years of entering the Convention, and every four years thereafter.

## Submitted Biennial Reports

BURs provide an update of the information presented in NCs, in particular on national GHG inventories, mitigation actions, constraints and gaps, including support needed and received.

The first BUR should be, consistent with the Party's capabilities or level of support provided, submitted by December 2014, and every two years thereafter. Least developed country Parties and small island developing States may submit BURs at their own discretion.

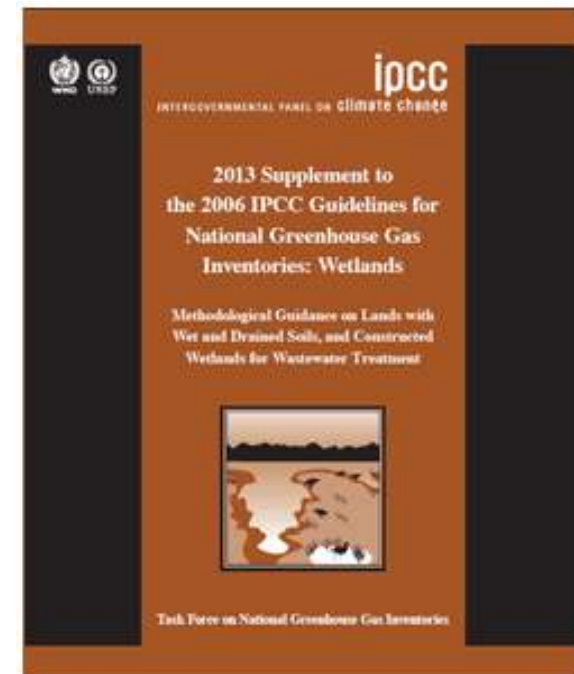
## Submitted national adaptation programme of actions (NAPAs)

NAPAs provide a process for least developed countries (LDCs) to identify priority activities responding to their urgent and immediate needs with regard to adaptation to climate change.

# Land Use, Land-Use Change and Forestry (LULUCF) & IPCC Guidelines

## 2006 IPCC Guidelines for National Greenhouse Gas Inventories

- The IPCC Guidelines are intended to be used by all Parties to the UNFCCC.
- Use of IPCC guidelines is mandatory for Annex I Parties and **recommended for other countries.**



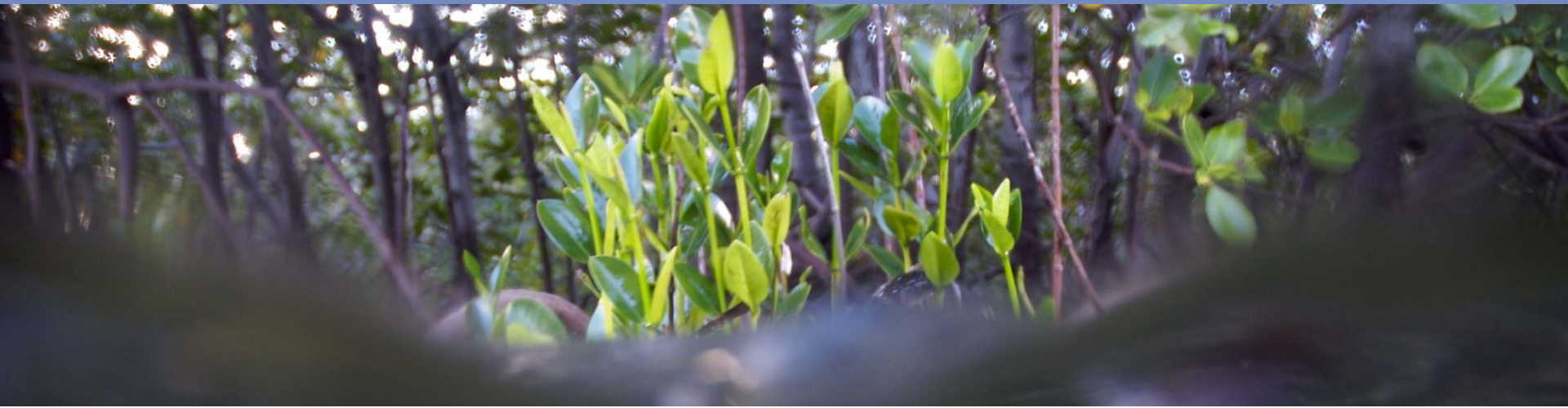
# REDD + Mangroves

- On the agenda since 2005
- **Mangroves included if nationally defined as forest**
- „Voluntary“ inclusion of other BC ecosystems



## Methodological Guidance (SBSTA)

- Phased approach for the development of **monitoring** systems
- Stepwise approach to **measuring, reporting and verifying** data for REDD+



- Work programme on **results-based finance**
- Modalities for national forest **monitoring** systems
- Modalities for measuring, reporting and verifying (**MRV**)
- Addressing the **drivers** of deforestation and forest degradation

Favourable international framework for mangroves  
A “matter” of national implementation & finance

# NAMA

## National Appropriate Mitigation Action



- In particular suited for salt marshes, sea grasses, and non-forest mangroves, but also good for mangroves
- Prioritize either readiness or implementation depending on existing capacity
- Funding through multi-/bilateral initiatives providing fast-start finance
- Seeing some interest: Dominican Republic, Honduras, ...

# SUMMARY SO FAR ....

	Non Annex I countries	Annex I countries
<b>National Communication and reports/ commitments to UNFCCC</b>	Encouraged to include wetlands in reporting	KP Parties can elect <b>rewetting and drainage</b> as LULUCF activity
<b>&amp; new IPCC wetlands guidelines</b>	Encouraged to use	Mandatory to use
<b>CDM – mangroves only</b>	As project implementers	Can be used to support mangrove reforestation activities in developing countries
<b>REDD+</b>	Mangroves National & sub national implementation	N/A
<b>NAMAs</b>	Opportunity for salt marshes, sea grasses, and non-forest mangroves National implementation	N/A



**United Nations**  
Framework Convention on  
Climate Change



**1. BRIEF INTRODUCTION TO THE UNFCCC & HOW COASTAL BLUE CARBON FITS INTO THE AGENDA**

**2. OVERVIEW OF INCENTIVES & MECHANISMS FOR COASTAL BLUE CARBON**

**ANNEX I: NATIONAL REPORTS & CDM**

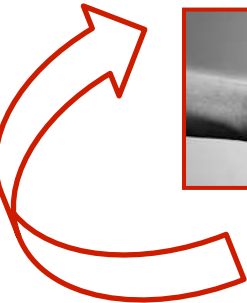
**NON ANNEX I: NATIONAL REPORTS, REDD & NAMAs**

**3. ONGOING NEGOTIATIONS UNDER THE UNFCCC**

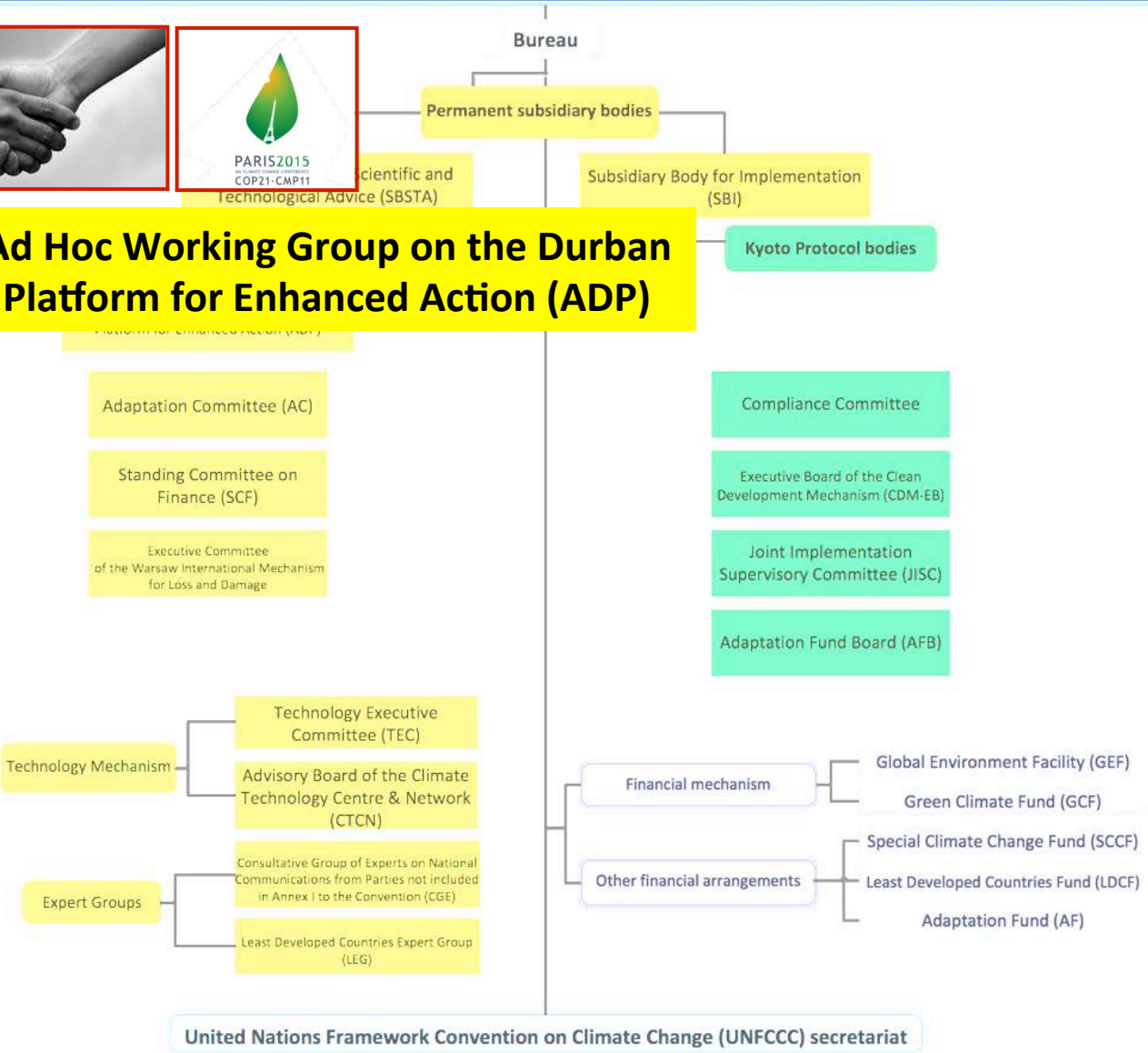
**4. BRIEF SIDE STEP: POLICIES BEYOND THE UNFCCC**

# BODIES OF THE UNFCCC

**Conference of the Parties (COP) /  
Conference of the Parties serving as the meeting of the Parties to the Kyoto Protocol (CMP)**

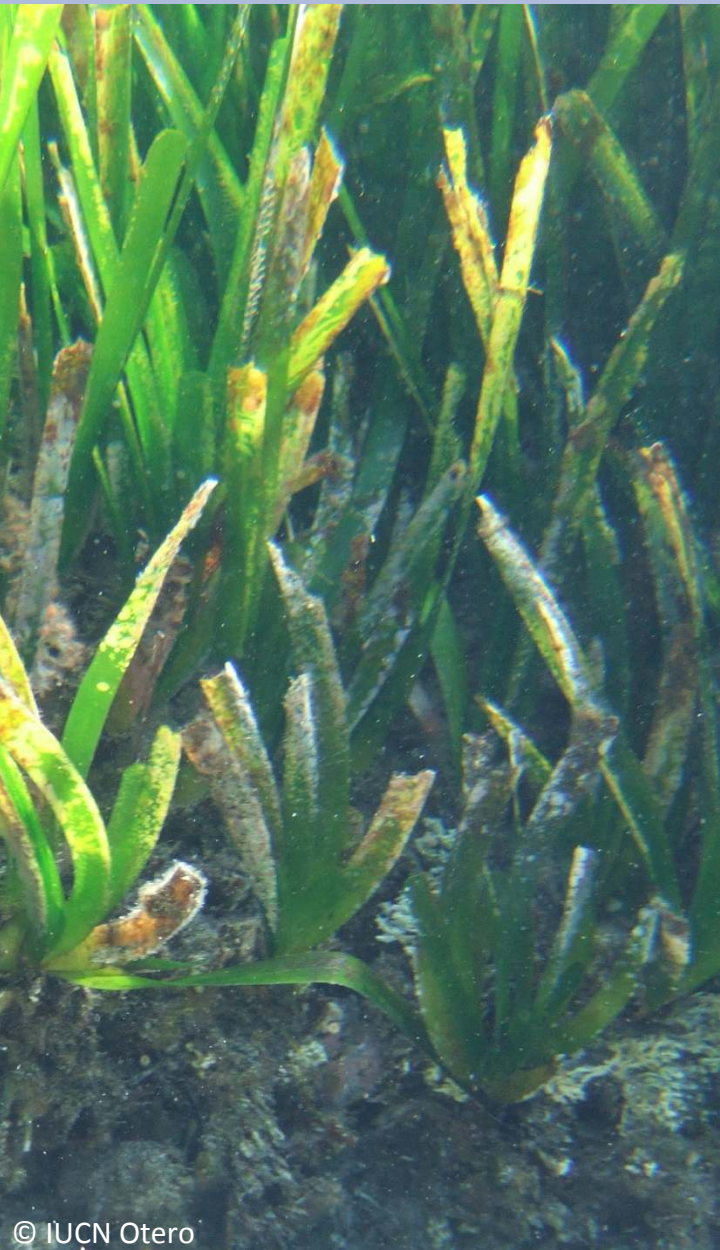


**Ad Hoc Working Group on the Durban Platform for Enhanced Action (ADP)**



# ADP

## GENERAL MESSAGES



# Use of ***nature-based solutions*** to climate change that can simultaneously contribute towards both **mitigation and adaptation objectives across multiple levels, while also yielding various other co-benefits.**

# Appropriate integration within the **2015 agreement**, and also within relevant national and sub-national planning and implementation processes on climate change, including National Adaptation Plans.

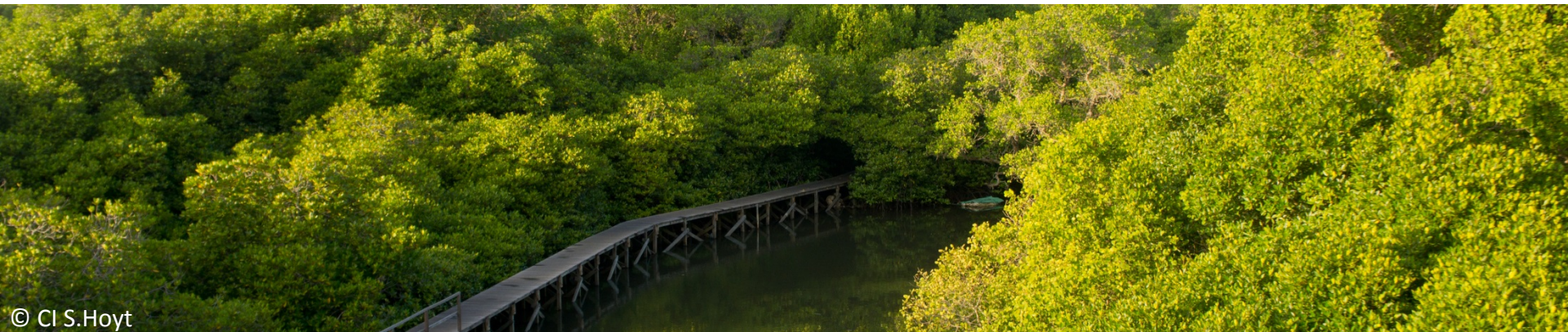
# ADP

## MITIGATION & ADAPTATION

# Need for **comprehensive coverage and accurate of GHG sources and sinks**, and inclusion of **all terrestrial, marine and coastal ecosystems as effective natural sinks and reservoirs of GHGs**.

# Drawing on the latest available and accepted **UNFCCC and IPCC guidelines and methodologies**

# Continue the **expansion of coastal and marine protected areas**



# INDCs

## & WETLANDS / BLUE CARBON



### 2. Ecosystem-Based Adaptation

Increase **carbon capture and strengthen coastal protection** with the implementation of a scheme of conservation and recovery of coastal and marine ecosystems such as coral reefs, mangroves, sea grass and dunes.

*Sectors:*

The U.S. target covers all IPCC sectors.

  
EU2015.LV

- Deforestation
- Forest management
- Cropland management
- Grazing land management
- Or equivalent land-based accounting using UNFCCC reporting categories
- Other categories/activities elected by the EU and its Member States as Parties to the Kyoto Protocol and its Doha Amendment.

**Approach to accounting for agriculture, forestry and other land uses**

Comprehensive accounting framework, activity or land-based approach, for emissions and removals from land use, land-use change and forestry.

# Need for **the Green Climate Fund (GCF)** to further enhance processes to enable the necessary provision of support to developing countries in their mitigation and adaptation efforts, with a focus on biodiversity conservation, **protected area management and coastal area protection.**

# Need for **greater synergies among the three Rio Conventions, the Sustainable Development Goals, and other relevant international agreements**



# SUMMARY SO FAR ....

	Non Annex I countries	Annex I countries
<b>National Communication and reports to UNFCCC</b>	Encouraged to include wetlands in reporting	KP Parties can elect <b>rewetting and drainage</b> as LULUCF activity
<b>&amp; new IPCC wetlands guidelines</b>	Encouraged to use	Mandatory to use (if they chose to elected wetlands as reporting category - KP)
<b>CDM – mangroves only</b>	As project implementers	Can be used to support mangrove reforestation activities in developing countries
<b>REDD+</b>	Mangroves National implementation & sub national implementation	N/A
<b>NAMAs</b>	Opportunity for salt marshes, sea grasses, and non-forest mangroves	N/A
<b>INDCs</b>	<b>LULUCF</b>	



**United Nations**  
Framework Convention on  
Climate Change



**1. BRIEF INTRODUCTION TO THE UNFCCC & HOW COASTAL BLUE CARBON FITS INTO THE AGENDA**

**2. OVERVIEW OF INCENTIVES & MECHANISMS FOR COASTAL BLUE CARBON**

**ANNEX I: NATIONAL REPORTS & CDM**

**NON ANNEX I: NATIONAL REPORTS, REDD & NAMAs**

**3. ONGOING NEGOTIATIONS UNDER THE UNFCCC**

**4. BRIEF SIDE STEP: POLICIES BEYOND THE UNFCCC**

CLIMATE  
CHANGE



United Nations  
Framework Convention on  
Climate Change

OCEANS



BIODIVERSITY  
CONSERVATION



Convention on  
Biological Diversity



SUSTAINABLE  
DEVELOPMENT



??????

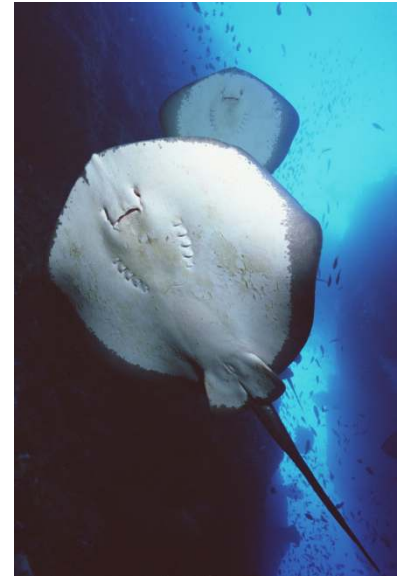
GLOBAL  
POLICIES

SECTORAL  
POLICIES

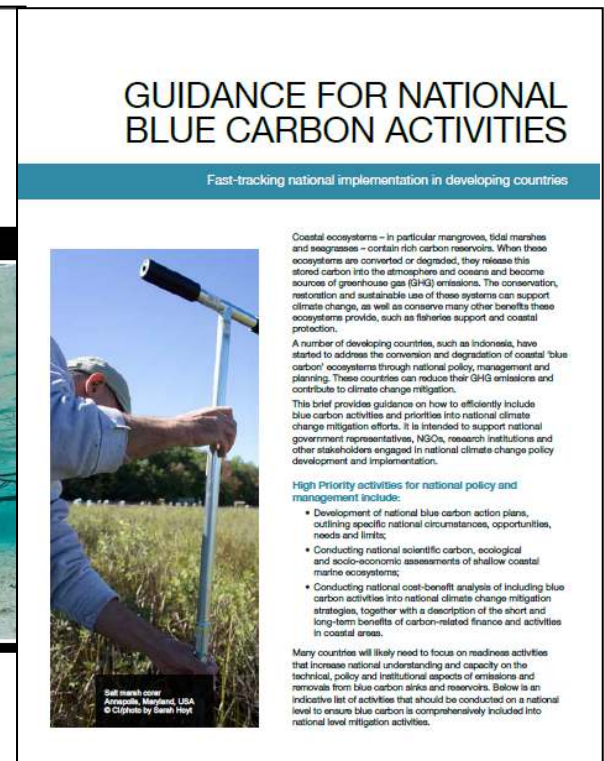
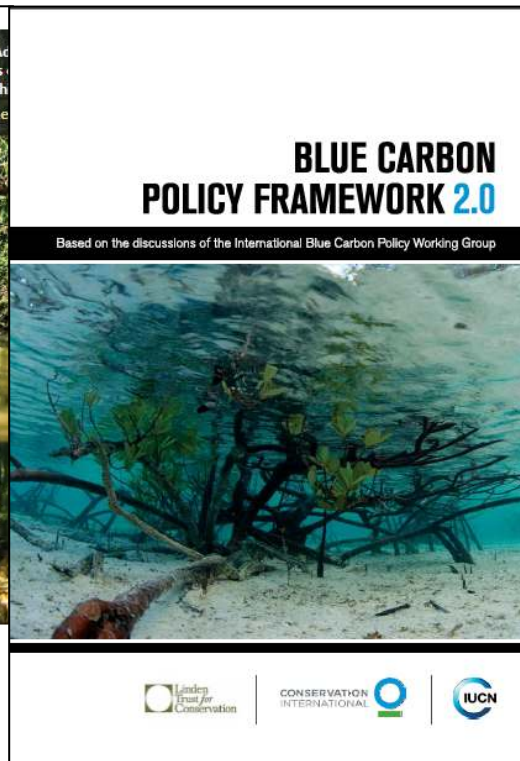
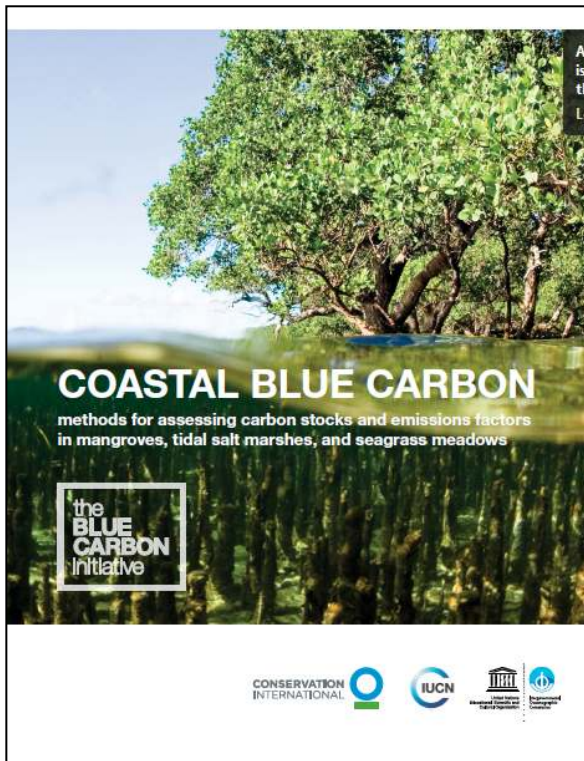
REGIONAL  
POLICIES

# CONCLUSIONS

- **Overall favourable UNFCCC environment with „room for improvement“**
- **„Fate“ of wetlands linked to broader LULUCF discussion and overall ambition of Paris agreement & INDCs**
- **Much to do on national implementation**
  - Technical support
  - Financial support
  - Policy development and planning, linking climate change (adaptation and mitigation) with coastal policies and planning (fisheries, biodiversity conservation, etc)



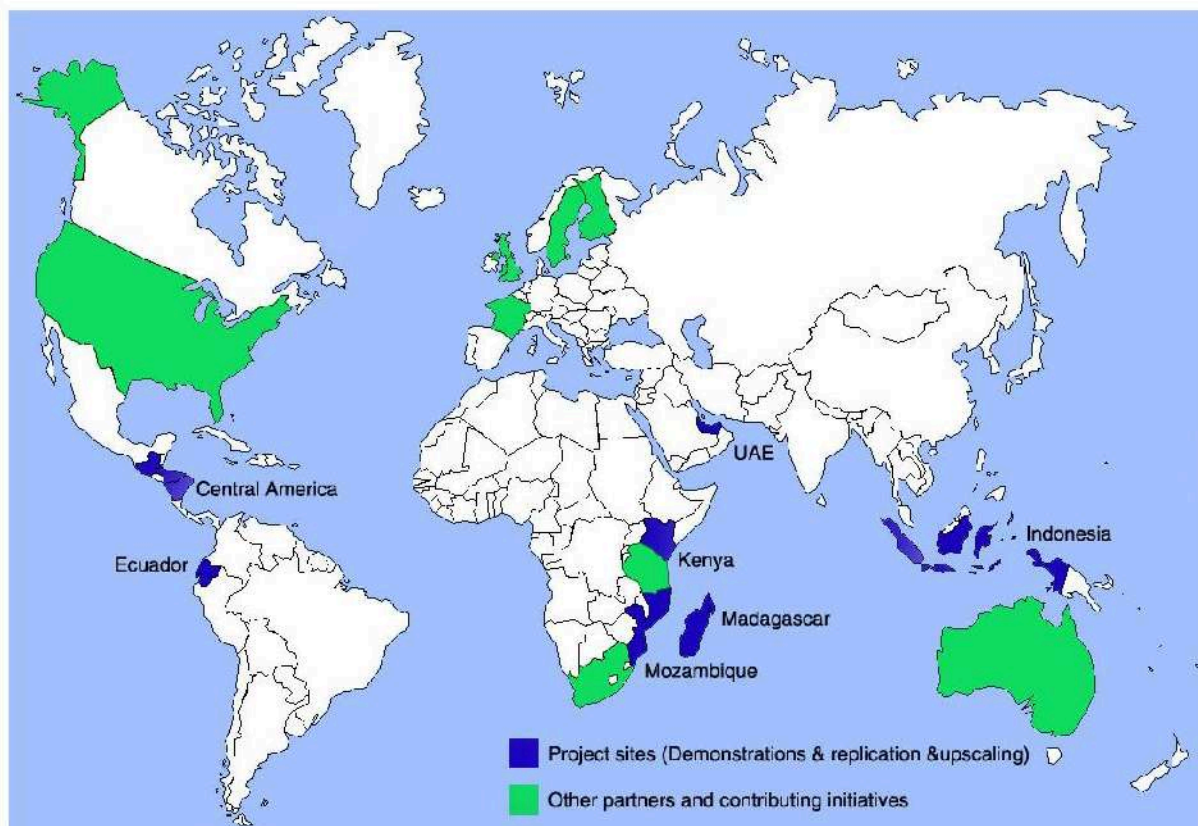
- Active since 2009
- Policy and Scientific Advise
- Negotiations and national implementation
- Upcoming workshop 23-25 June, Ecuador





GEF/UNEP Blue Forests Project

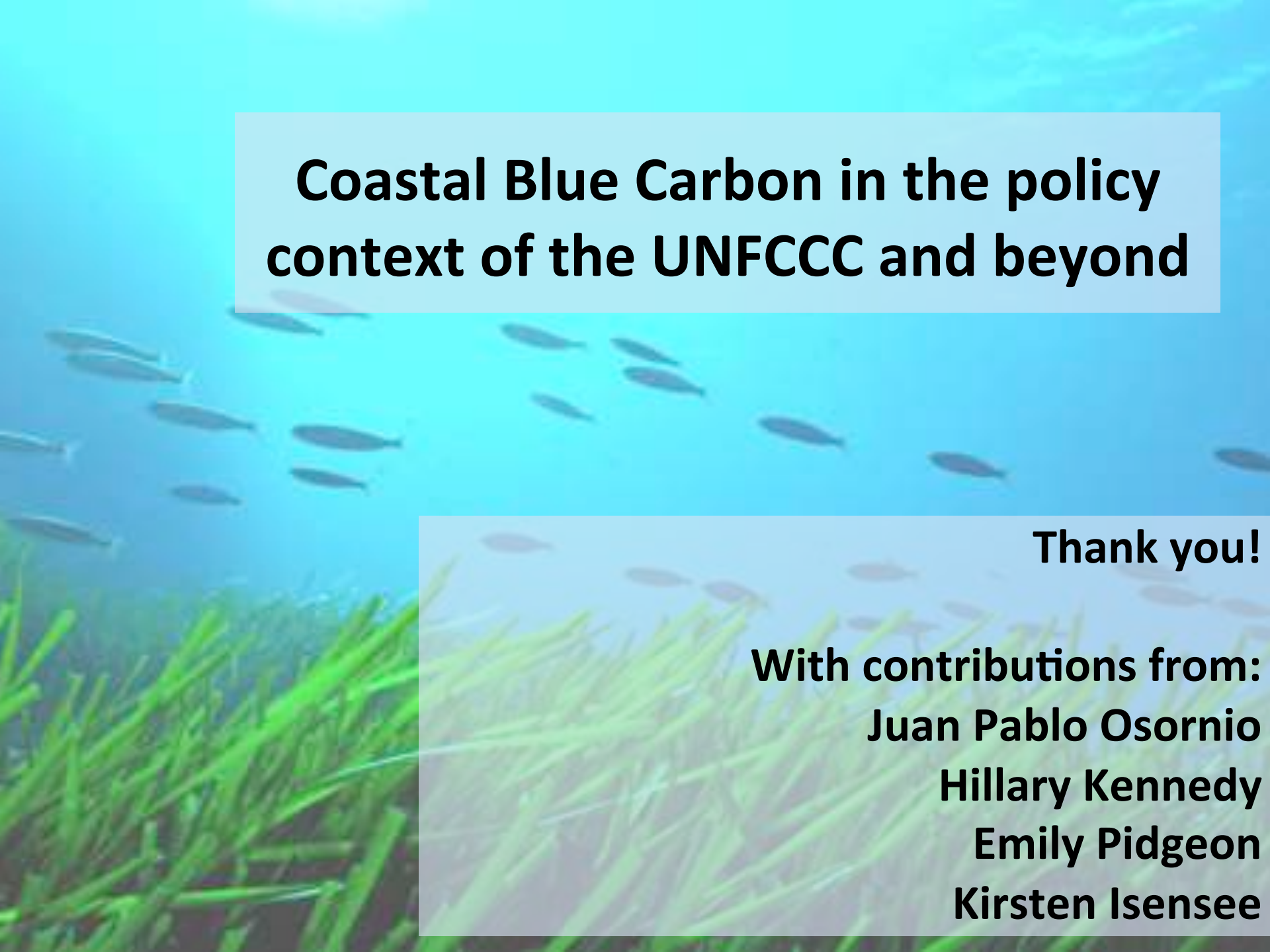
[www.gefbblueforests.org](http://www.gefbblueforests.org)



### *Key outputs:*

- International demonstration and application of “blue forests” values
- Active experience sharing, learning and replication



The background of the slide is an underwater photograph. The upper half shows a clear blue water column with many small, silvery fish swimming in various directions. The lower half shows a dense field of green seagrass or algae, slightly out of focus. A semi-transparent white rectangular box is positioned in the upper left, containing the main title. Another semi-transparent white rectangular box is in the lower right, containing the thank you message and contributor names.

# **Coastal Blue Carbon in the policy context of the UNFCCC and beyond**

**Thank you!**

**With contributions from:**

**Juan Pablo Osornio**

**Hillary Kennedy**

**Emily Pidgeon**

**Kirsten Isensee**